

# MAC SMTP Authentication Configuration- Netscape

1. Open Netscape browser.
2. Select **Edit** menu (see Figure 1).

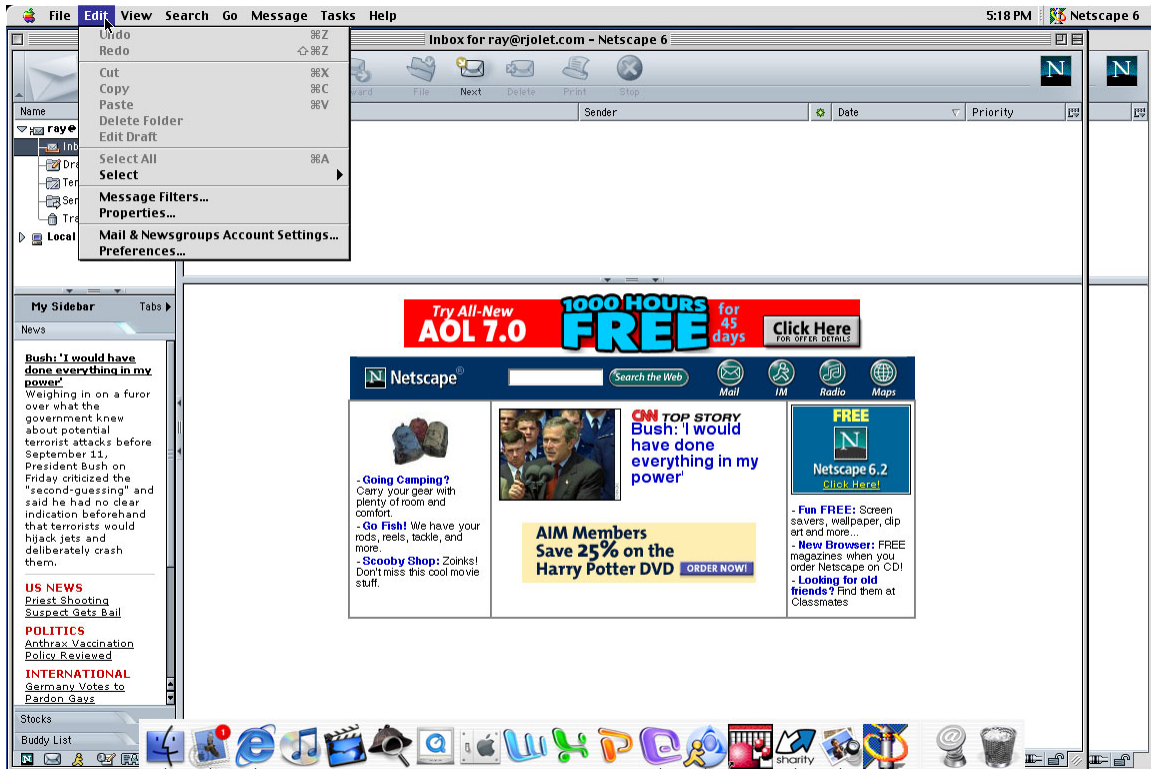


Figure 1

3. Select **Mail & Newsgroups Account Settings** from the Edit menu (see Figure 2).

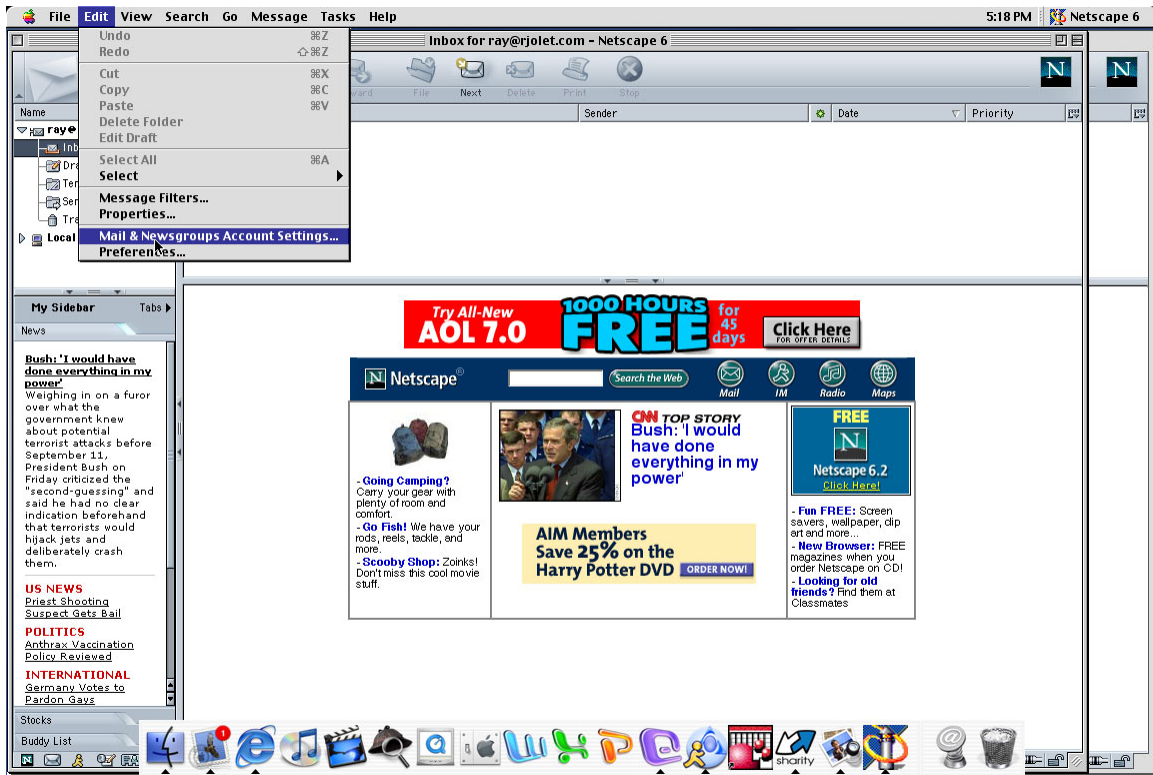


Figure 2

4. Select **Outgoing Server**.
5. Check the box next to **Use Name and password** (see Figure 3).

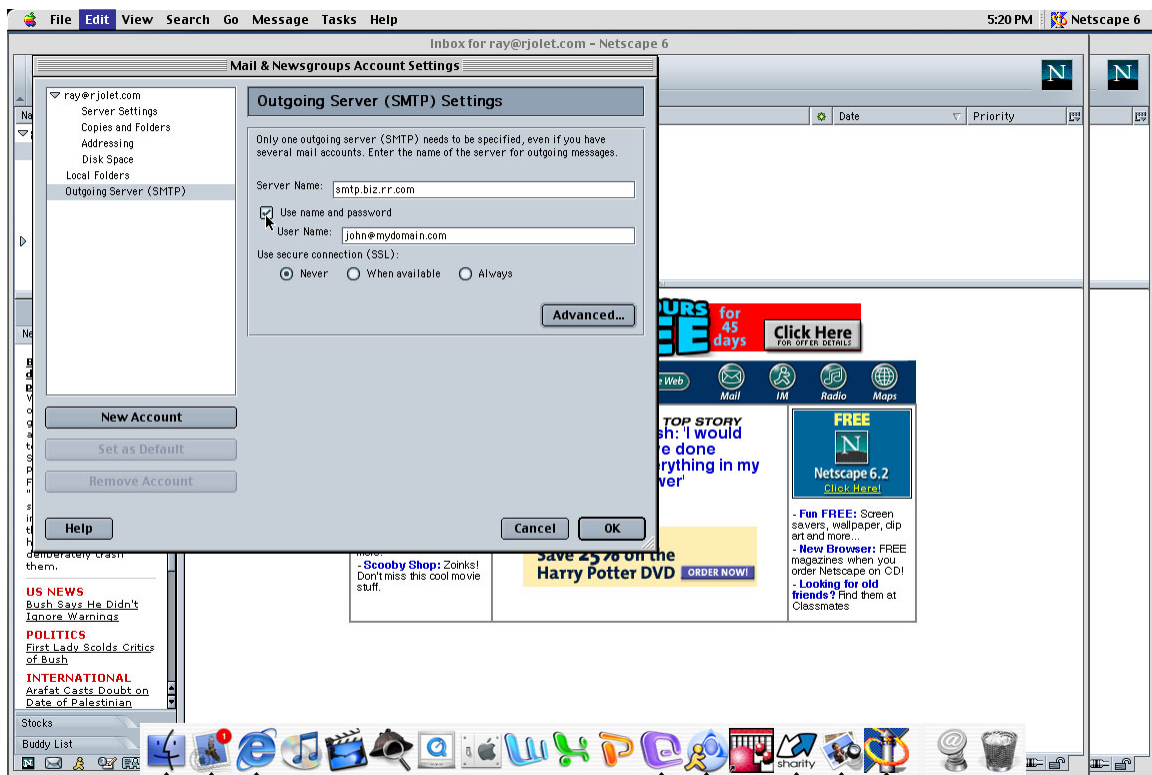


Figure 3

6. Enter User Name (complete e-mail address).
7. Click **OK**.